

Instruction Manual

Zvezda/Revell ISD Upgrade

1:2700 Scale Model parts

UPGRADE PARTS

MosEisleyModelworks.com

Notes on: Assembly

Working With Resin

Cleaning Parts

This model is 3D printed in UV sensitive resin. It has been rinsed, cleaned, rinsed again and then given a final cure before shipping. You may clean the parts again to remove any oils from your fingers if you wish. If you choose to clean the parts use light soap or mild de-greaser in luke warm (not hot) water.

Warped Parts

Occasionally a part may be slightly warped. It is simple to fix by running the part under hot water; once it had softened, you can bend it carefully back into shape. Once the part is straight hold it in place under cold water to set the shape.

Surface Prep

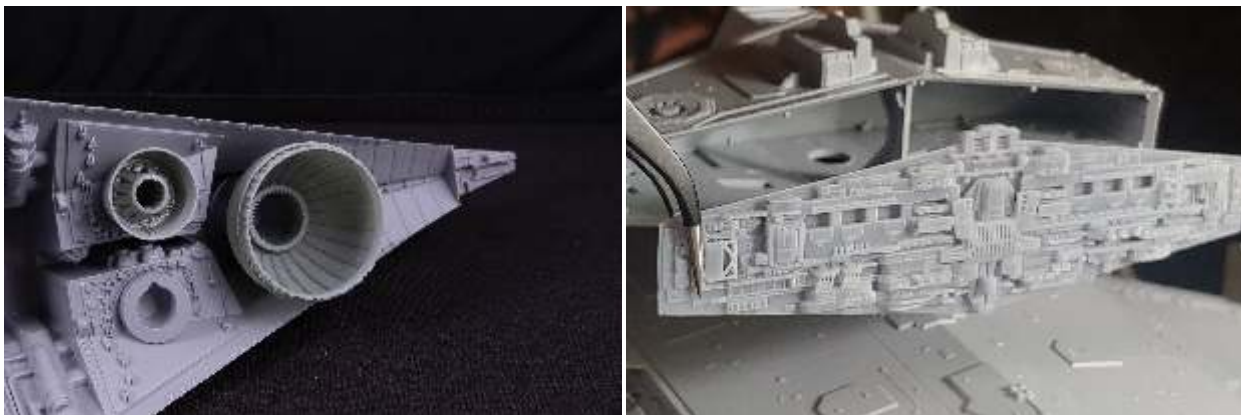
Like styrene models the surface of some resin pieces may need some smoothing or sanding. There are no mold lines with 3D printed parts but there may be small dimples to smooth. Most parts To do this, simply use fine grit sandpaper* and smooth any imperfect surfaces. I also recommend a filler putty like Tamiya Putty, Perfect Plastic or Mr. Surfacer if needed to fill small imperfections.

Glue

To glue resin, you should use Cyanoacrylate (Super Glue). You can sand the join area first to give it some tooth and a stronger bond if desired. For an extra strong bond- 2 part epoxy can be used on large pieces. You may also choose to drill small holes and pin pieces together though on the TIE Bomber model I have not found this necessary.

Zvezda/Revell ISD Upgrade

Some of the upgrade parts included in this pack will require alterations to the stock kit parts. The following pages illustrate where these parts are installed. I have outlined the manner in which I made these alterations however the methods used to achieve this are completely up to the individual modeler.

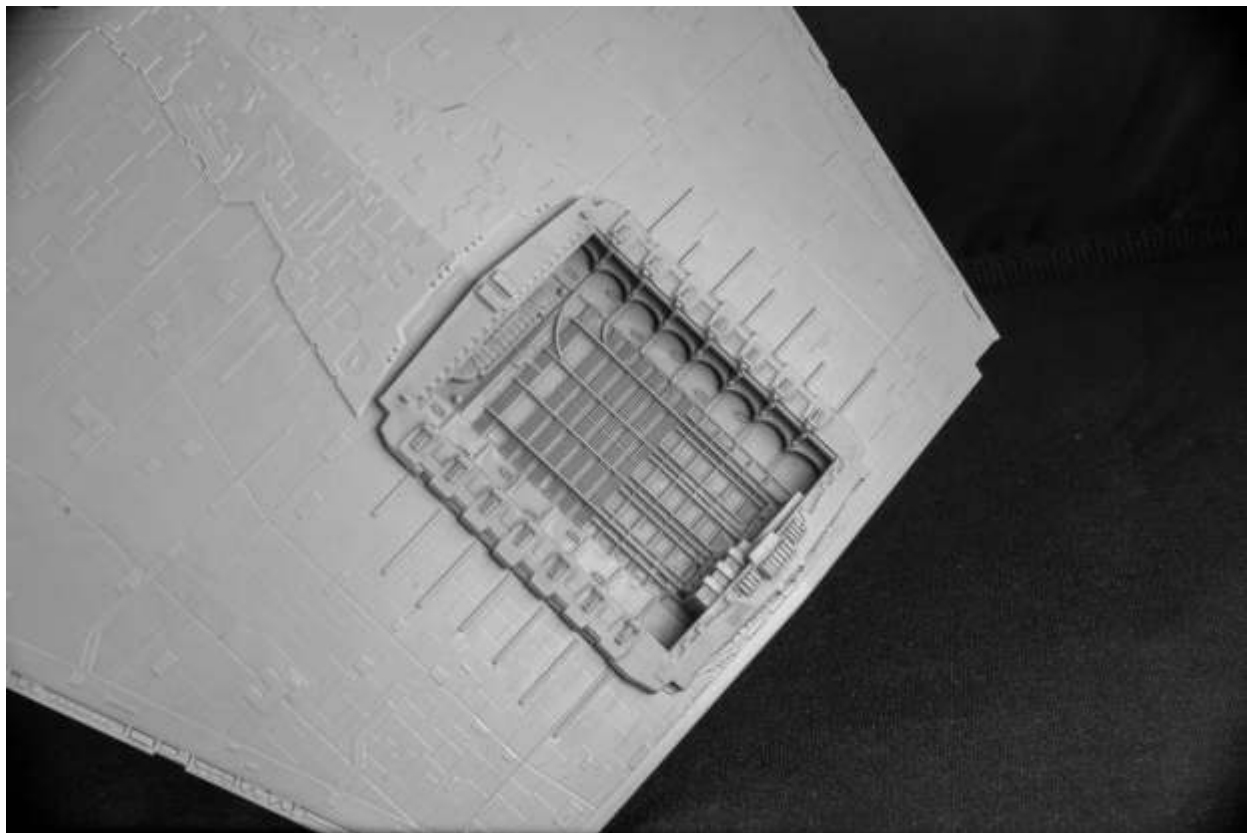
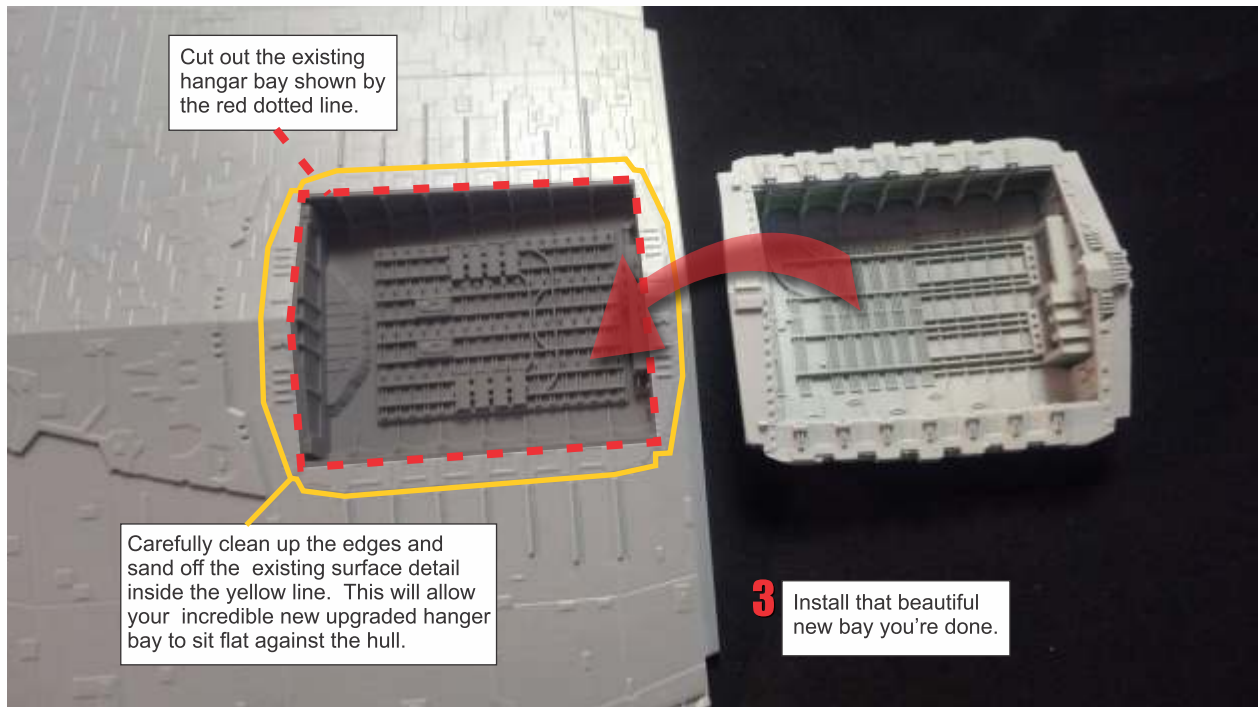


The main engine bells, secondary engine bells as well as the bridge tower face will fit as direct replacements for the stock parts and no alterations are needed.

1



Hangar Replacement

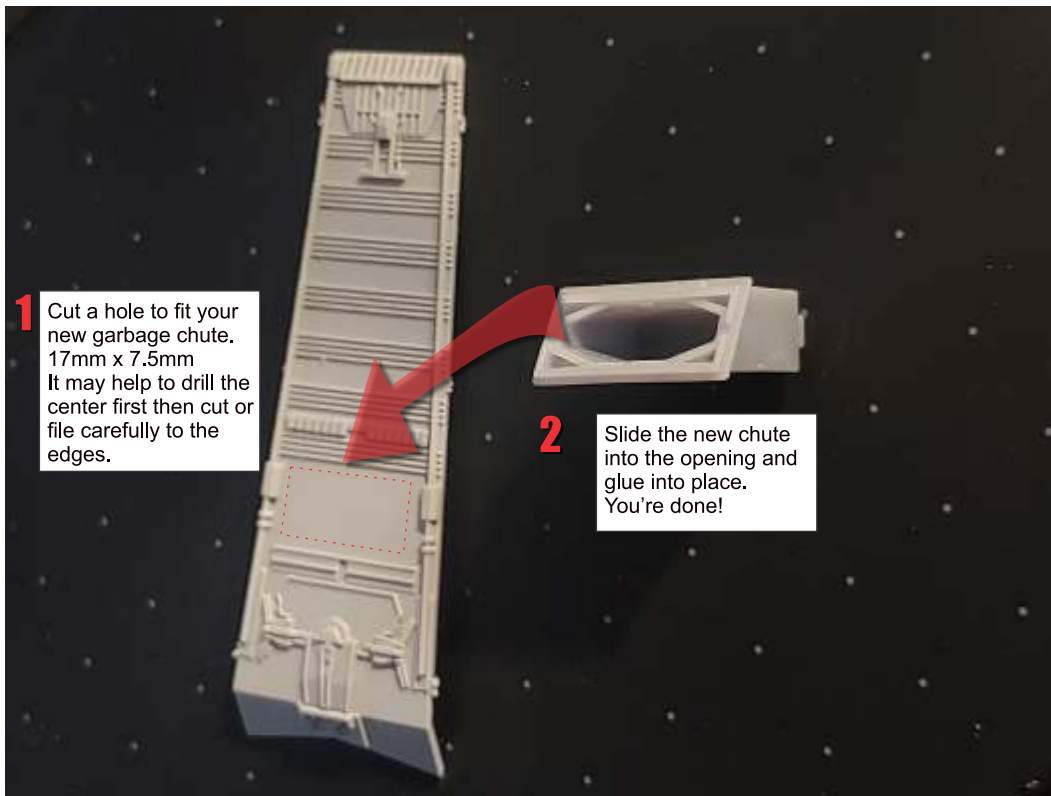


Assembly

2



Garbage Chute Upgrade



Example of the addition of greebles to add detail under the garbage chute.

Assembly

3



Deflector Shield Generator Replacement

Stock piece. The tower base is flat and sticks up above the angled top of the bridge. It needs cut down flush with the bridge top.



Here is the part taped to protect the surface. I used a Trumpeter model saw (pictured) to make the cut.



After the cut.



Replacement tower glued in position.



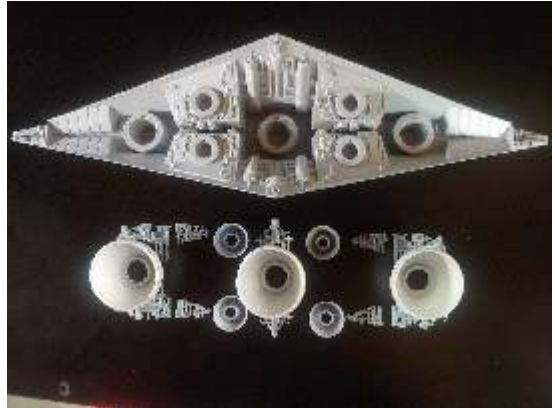
Assembly

4

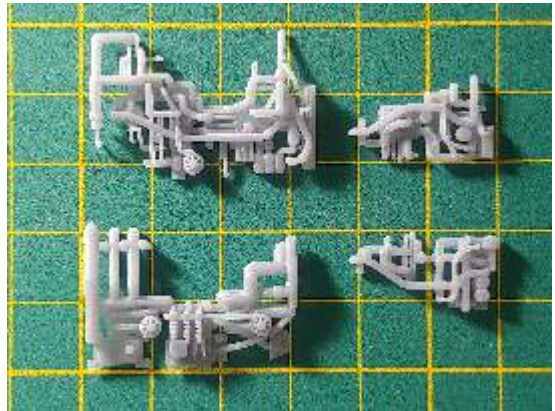


Engine Bell Panel Greeblies

General layout of the upgrade parts for the rear engine panel.



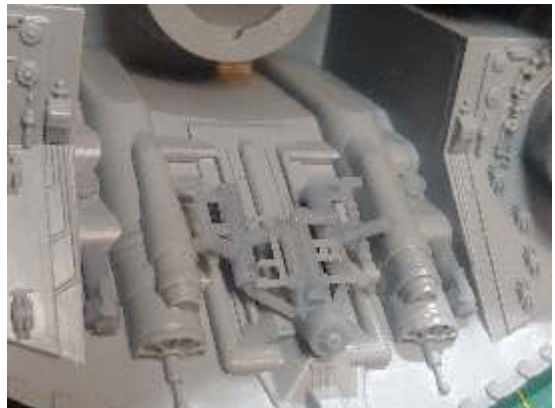
4 thruster pipe greebly variations. Mirror them for the other side.



Placement of the Thruster Pipe Greeblies.



Placement of the Center Thruster Pipe Greebly.



Add more random greeblies in these areas as you see fit but be sure to leave space for the engine bells to fit.

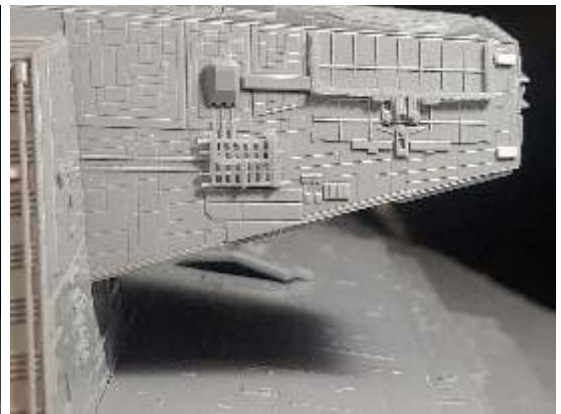
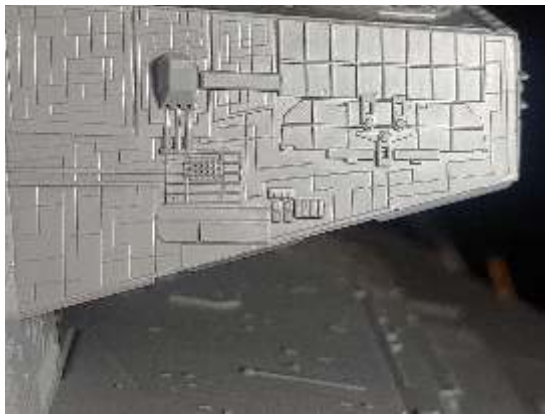
Assembly

5

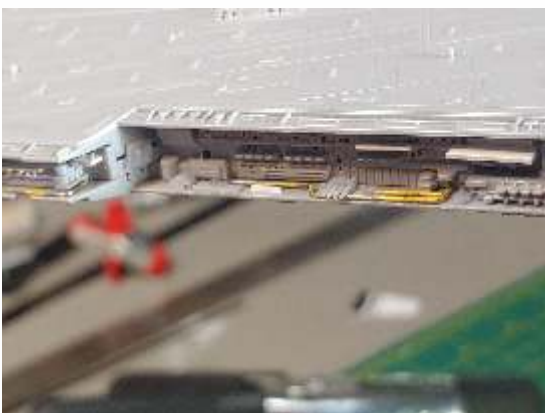
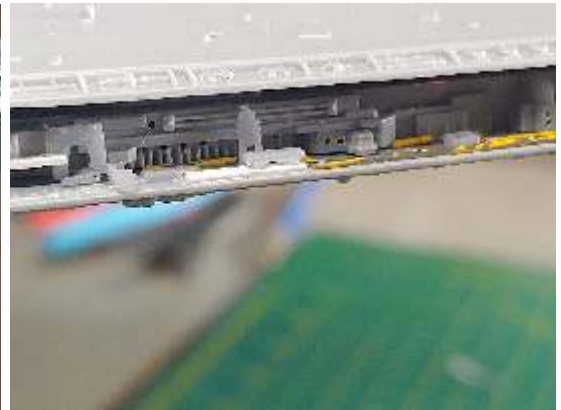


Greeblies

Before and after examples of small greebly detailing. (The white shapes are made with small chips of sheet styrene plastic available at your local hobby store)



Adding detail is up to your individual preference and taste. Along with resin greeblies these images show small pieces of sheet styrene as well as bent steel and copper wire to simulate pipes. There are plenty of places on the Zvezda/Revell Star Destroyer kit to add as much detail as you like!





Visit us at
www.moseisleymodelworks.com
to stay up to date on kits, upgrades
and upcoming projects!